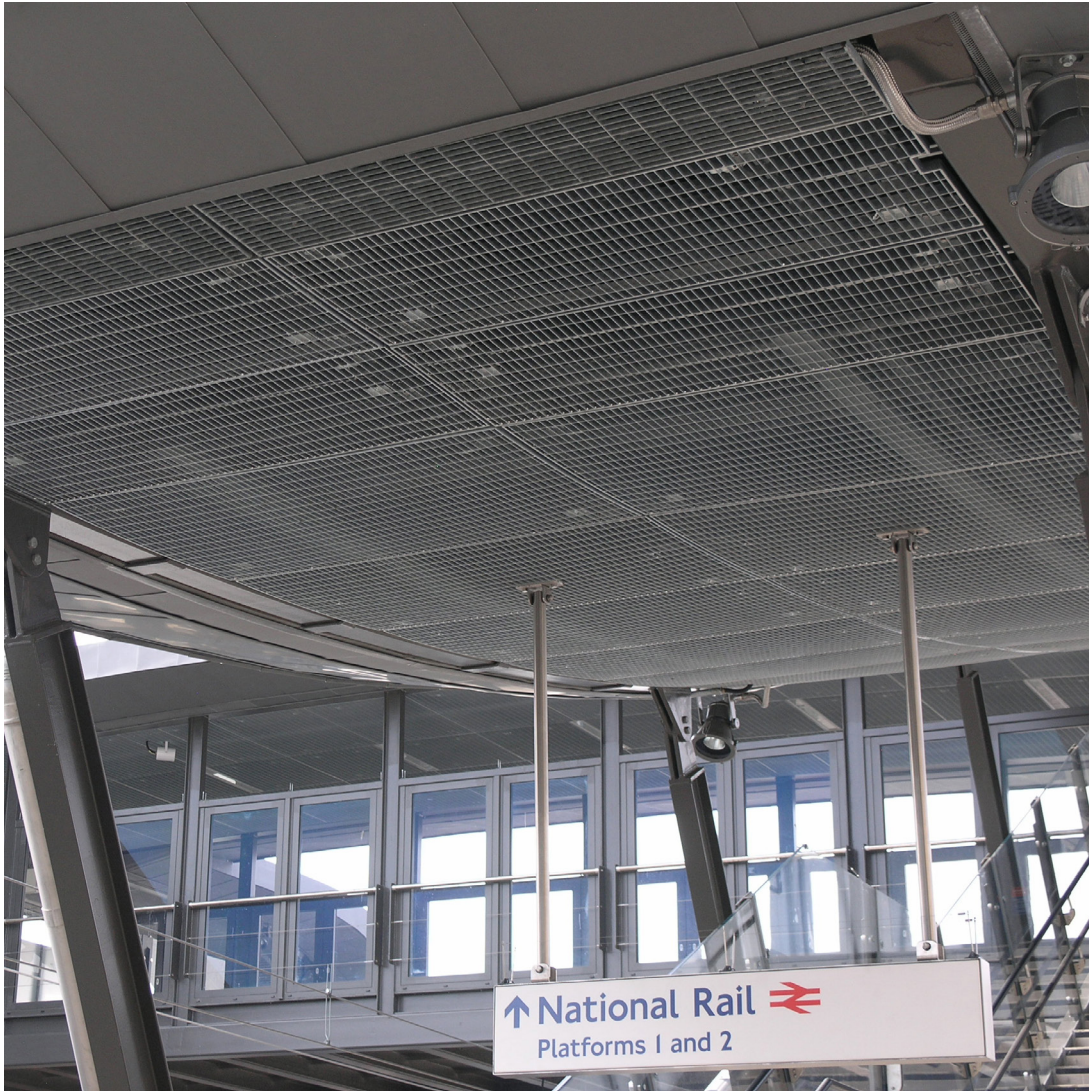


## Network Rail - Abbey Wood Station Soffit & Fascia Panels, Barrier Screen and Fencing



Abbey Wood station forms the interchange between the Elizabeth Line and Network Rail's Thameslink and South-Eastern tracks. Designed by architects Fereday Pollard, the award winning new station includes multiple components supplied by Lang & Fulton, contributing to the success and recognition of this transformational project.

Lang & Fulton's range of premium steel grating products and bespoke design service have likewise contributed to other successful Network Rail projects including the stations at Meridian Water and Rochester.

Architect: Fereday Pollard  
Main Contractor: Balfour Beatty  
Client: Network Rail

Categories: Soffit and Fascia Panels & Security Screens & Barrier Fencing

Products: Stretto-22 soffit panels, Torino-11 anti-projectile security screen, Torino-22 barrier fence

Project: Abbey Wood Station - soffit panels  
Abbey Wood Station - barrier fence







### **The Soffit Panels**

The new footbridges mimic the sculptural form of the main station building. This required Lang+Fulton's soffit panels to be exactly contoured to the demanding serpentine shape of the stair canopies. The Stretto-22 product, with a bespoke 66x22 mm aperture, was selected on account of its exclusive arrangement of transverse bars which provide visual screening as well as functional access to the integrated services and lighting.

### **The Barrier Screen**

The large panels of Torino-11 grating which safeguard the overhead line equipment were finished with curved profiles as an extension of the architect's vision for a project with a fluid and connected aesthetic. The small aperture of the grating conforms to Network Rail's regulations for safeguarding tracks. Lang+Fulton's design team delivered custom posts which also provided integrated support for the ground level acoustic blockwork.

### **The Barrier/Parapet Fencing**

Torino-33 fencing for the edge of the platform was engineered with a heavy, intermediate, horizontal framing bar to comply with Network Rail's specified loading requirement.

### **The Louvred Enclosures**

DeltaBox-70 louvred screening panels were supplied to provide secure storage and ventilated spaces under the stairways.



## Related Projects

### Here East, Queen Elizabeth Park

Product: Stretto-11 soffits and fascias  
Architect: Hawkins Brown



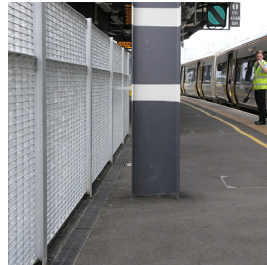
### Rochester Station - Soffit Panels

Product: Quattro-33  
Client: Network Rail



### Rochester Station - Barrier Fencing

Product: Torino-33  
Client: Network Rail



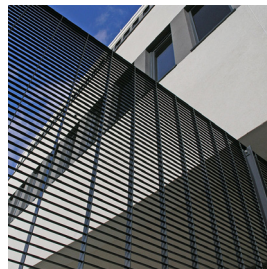
### Strathclyde University - Brise Soleil

Product: Demi-Metro-33  
Architect: Reiach and Hall



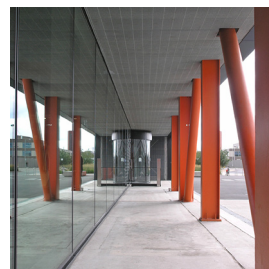
### Channelsea House - Fencing

Product: Torino-22  
Client: IDM Properties



### Here East, Queen Elizabeth Park

Product: Stretto-11 external cladding  
Architect: Hawkins Brown



— LANG+FULTON —

Newbridge Industrial Estate, Newbridge, Edinburgh EH28 8PJ  
t: 0131 441 1255 sales@langandfulton.co.uk www.langandfulton.co.uk